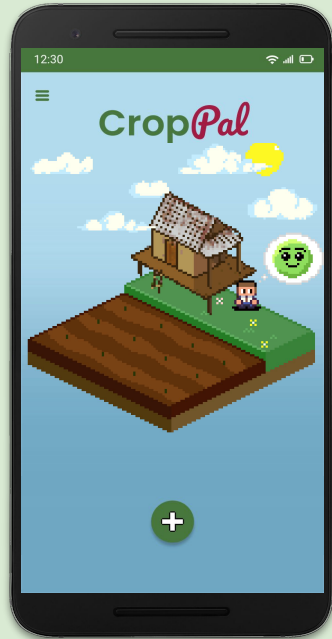


Crop*Pal* by **AgriG8**

Rice Farmers' Smart Farming Companion



App Overview



Gamified and embedded with Google Earth Engine

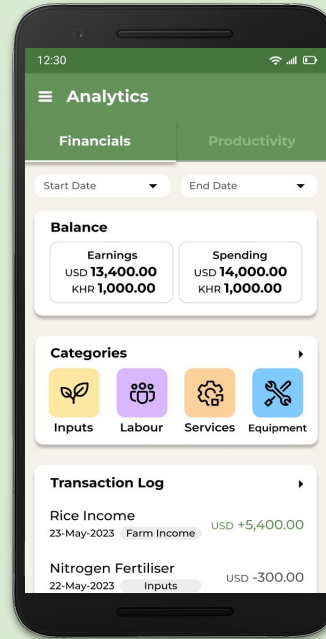
Crop performance monitoring that just clicks with farmers, coupled with advanced remote sensing for real-time feedback that farmers can react to intuitively.



Easy to record, easy to review

The most requested feature by farmers around the region

Comparing cost VS productivity over different seasons
Identify strategies to maximize yield and eliminate crop failure risk
Monitoring market rates of inputs over the years



Community alerts & survey

[coming soon!]

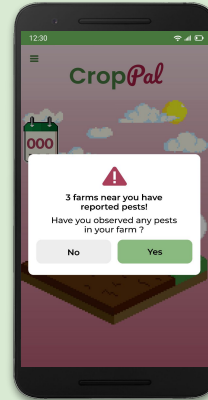
Automated community alerts to minimize effects of pest and disease on crops.
Additional survey for holistic understanding

SRP Integration



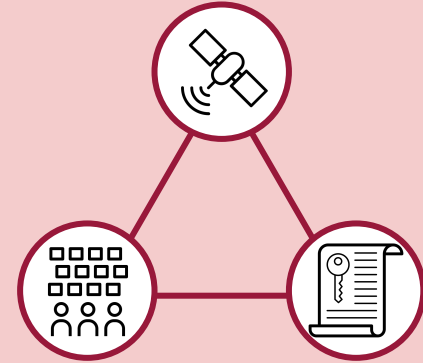
Basic Functions

Field activities log auto generates **27%** of the SRP Questionnaire and **40%** of Performance Indicator at Basic to Intermediate Level



Advance Features

Survey and feedback feature unlocks additional **58%** of the SRP survey and **50%** of Performance Indicator at Basic to Intermediate Level



Data Validation Logic

Data confidence level assessed via **remote sensing data, user statistics** and **third party information**.

System View

Data Source



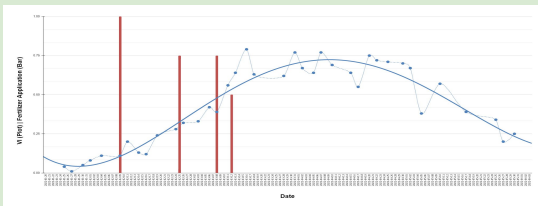
Google Earth Engine



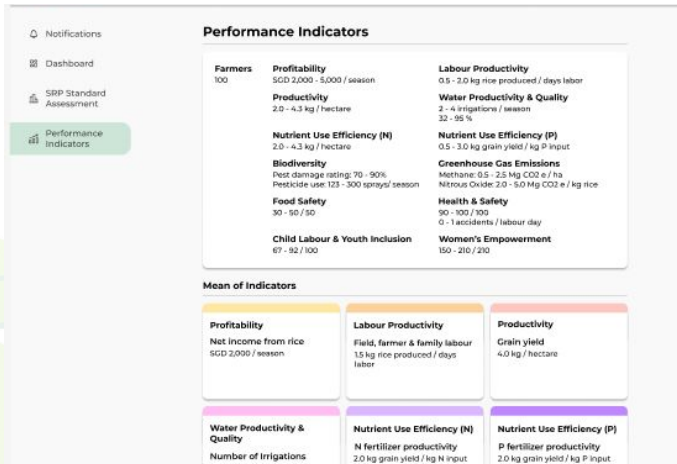
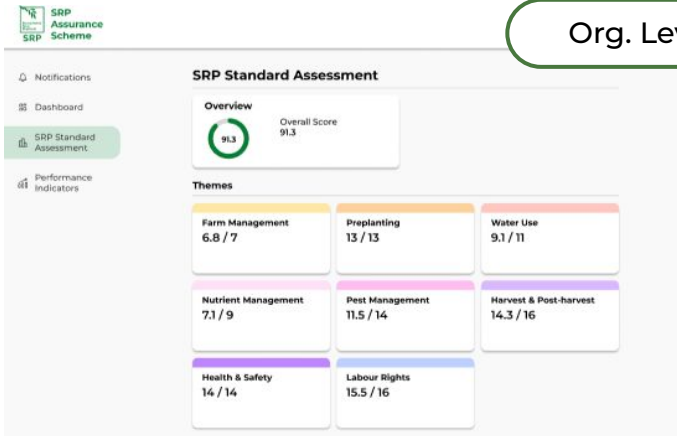
Project Database

Date	DAC	Type	Subtype	Qty	N	Rating	Photo
1/10/2022	-17	Mechanised Services	Tractor			3	
1/17/2022	-10	Water Management	Irrigate				
1/26/2022	-1	Mechanised Services	Leveler			3	
2/10/2022	14	Water Management	Irrigate				
2/16/2022	30	Water Management	Drain				
2/18/2022	22	Fertiliser	Urea	0.25	5.75	3	
2/18/2022	22	Fertiliser	13,13,15	0.50	3.75	3	
2/19/2022	23	Water Management	Irrigate				
3/4/2022	36	Water Management	Drain				
3/4/2022	36	Water Management					
3/5/2022	37	Fertiliser	Urea	0.25	5.75		
3/6/2022	38	Water Management	Irrigate				
3/10/2022	42	Scouting	Scouting				
3/15/2022	47	Scouting	Scouting				
3/19/2022	51	Scouting	Scouting				

Logic Check



Org. Level Output



*data displayed in mock up are fictional

Potential Benefits & Other Applications

1

Accumulation of field level data and insight enhance access to **Finance & Insurance**

- Tangible outcomes (risk and cost reduction) for rice farmers to remain on the platform

2

Supports **MRV** activities to increase quality of data and bridge current gaps limited by costs and technologies

- Potentially leads to high carbon credit price in the VCM due to better quality of data collected

3

Develop **long term tracking strategy** by actively involving rice farmers at the most direct level in realtime

- Increase pre-verification confidence
- Decrease cost of impact measurement on seasonally basis

4

Develop advisory program using **farmers' own** historical activities as baseline

- Improve advisory acceptance rate
- Build Climate Adaptation capabilities

Where Are We Now

Ongoing pilots in **Vietnam** and **Thailand**

Pilot With Us

Open invitation to all SRP members to pilot with us.
Targeted pilot scale up to **20,000ha** in SEA in 2024

What We Provide

Full software support at farmers/field agent/organization level at preferential annual rate of **US\$2/ha***

Reach Out To Us

For demo, piloting and anything rice



David



Irsyad

Thank You

**At a scale of 20,000ha, excluding customization (if required) and one-timed set up fee*